

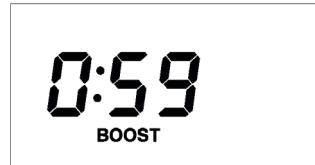
TYPICAL DISPLAYS - NORMAL



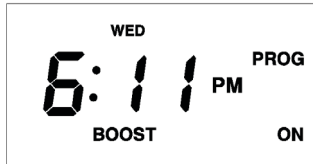
No program active



Off peak program active



Boost button pressed (remaining time left counts down)



Boost program active

TYPICAL DISPLAYS - SET/REVIEW



Set/review time



Set/review year



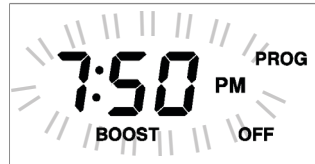
Set/review month



Set/review day



Set/review off peak programming (ON time shown as example)



Set/review boost programming (OFF time shown as example)

SERVICE AND WARRANTY

Guarantee: as shown on product identification label. Any tampering or misuse will invalidate this guarantee.

This product must meet Waste Electronic and Electrical Equipment Regulations (WEEE) for suitable environmental recycling, recovery and/or disposal. End of life products should be handled in line with local regulations. Alternatively return end of life product to Sangamo for correct disposal.

CUSTOMER CARE POLICY

As part of Sangamo's continuous improvement program, the company operates a Customer Care policy. This means we welcome your comments and complaints, as it can help us to improve our services to you, our customer.

Due to our policy of continuous product improvement and development, the specifications in this guide may be subject to change without prior notice.



WEE/JH0069TY



Sangamo Limited
Industrial Estate, Port Glasgow,
Renfrewshire, PA14 5XG

Tel 01475 745131
Fax: 01475 600370
Email: enquiries@sangamo.co.uk
Web: www.sangamo.co.uk

SANGAMO

Powersaver Dual Flexi



Immersion Water Heater Controller User Instructions

WHAT IS THE POWERSAVER DUAL FLEXI?

The Powersaver Dual Flexi is a water heater controller that combines ease of use with the efficient control of your water tank during off peak rate electricity periods to provide hot water when required.

This product differs from a simple time switch as it has programs built in that match with Economy 7, Economy 10 and Eco 20:20 electricity tariffs. This ensures your tank operates during off peak times avoiding expensive peak use.

As such this controller is **not** freely programmable, you can minimise the program times within your off peak period but not go outwith it,

You may need to contact your electricity supplier to confirm which tariff you are on and your specific off peak times before the product can be installed.

Should more hot water be required then pressing the 'BOOST' button will switch on the boost immersion element for ½, 1 or 2 hours to heat up part of the tank.

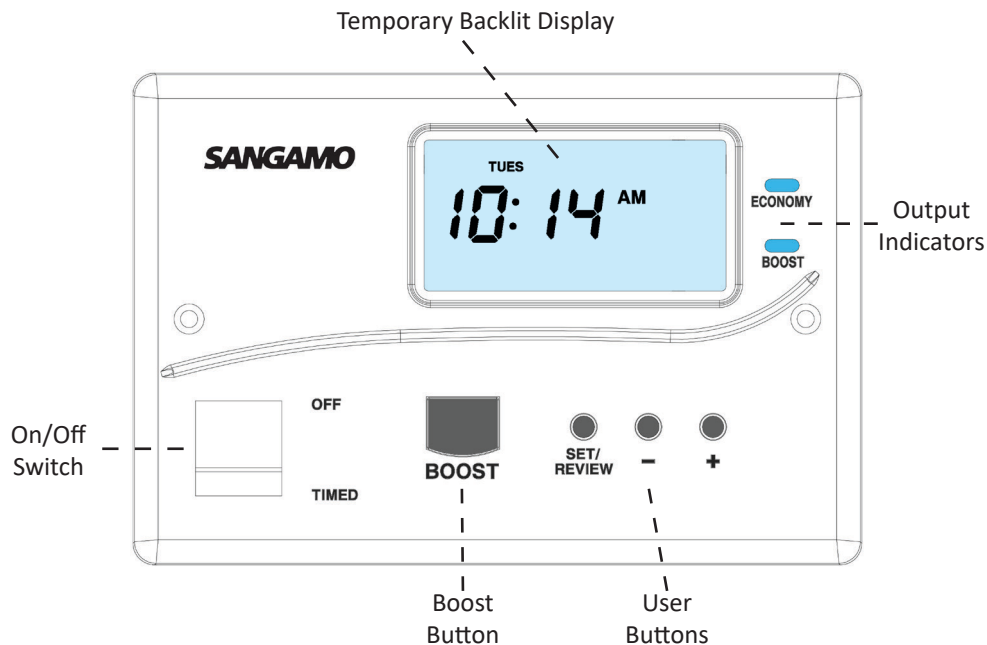
Where extra hot water will be required every day at the same time a Boost program of up to 2 hours can be entered. Again this will operate the boost immersion element to heat up part of the tank.

ON/OFF SWITCH

In the OFF position the electrical supply to the water tank immersion heater is disconnected even though the display continues to operate. In the TIMED position all programs and functions are active.

BACKLIT DISPLAY

The display is temporarily backlit for 15 seconds when mains power is supplied or if any button is pressed. This is useful where a product is installed in cupboards or dark environments.



SET/REVIEW BUTTON

Using the set/review button you can cycle through and alter all the settings on the controller. Using the + or - buttons at each step until you are happy with the setting then continue with set/review until all steps are completed. If no button is pressed in 30 seconds at any point the display reverts back to the main screen. During a Boost Program the Set/Review button is inactive.

NB: Depending on which preset program you are on, you may skip 7-10 (2nd and 3rd off peak period) or 9-10 (third off peak program)

- Press 1x - Time flashes; time icon appears; adjust the **time** (AM/PM format)
- Press 2x - Year flashing; adjust to current **year**, day shown
- Press 3x - Month flashing; adjust to current **month**, day shown
- Press 4x - Day flashing; adjust to current **date**, day shown
- Press 5x - 1st off peak **on** time flashing
- Press 6x - 1st off peak **off** time flashing (presets with one off peak period skip to 11)
- Press 7x - 2nd off peak **on** time flashing
- Press 8x - 2nd off peak **off** time flashing (presets with two off peak periods skip to 11)
- Press 9x - 3rd off peak **on** time flashing
- Press 10x - 3rd off peak **off** time flashing
- Press 11x - Boost program **on** time flashing
- Press 12x - Boost program **off** time flashing
- Press 13x - Return to main display, day shown

BOOST BUTTON

The boost button is used where, on a random basis, more hot water is required outwith any off peak or boost program times.

- Press once - 30 minute boost
- Press twice - 1 hour boost
- Press three times - 2 hour boost
- Press four times - Cancel boost

The display changes to show the time remaining in the boost period.

OUTPUT INDICATORS

The blue LED indicators confirm the status of the Powersaver Dual Flexi's output for each immersion element.

+/- BUTTONS

During normal operation the + & - button are not active and can be pressed to provide backlight on the display.

BOOST PROGRAM

Boost program times are available to be set outwith any off peak program times to a maximum of 2 hours, if desired.

Press the boost button to cancel a programmed boost period.

NB: Off peak programs always take priority over boost programs

RESET

To return to default settings press and hold **Set/Review**, + and - until all segments are shown on the display. Once released the product resets and then when;

- 0 is displayed - Press +
- 1 is displayed - Press -
- 2 is displayed - Press **Set/Review**
- 3 is displayed - Press **Boost**
- Time flashes - continue programming

Preset Programs

	Winter (GMT)						Summer (GMT+1)					
	ON	OFF	ON	OFF	ON	OFF	ON	OFF	ON	OFF	ON	OFF
Economy 7												
0	12:30am	6:30am					1:30am	7:30am				
1	11:30pm	7:30am					12:30am	8:30am				
2	10:00pm	8:30am					11:00pm	9:30am				
3	10:30pm	12:30am	2:30am	7:30am			11:30pm	1:30am	3:30am	8:30am		
Eco 20:20												
4	9:00pm	7:00am					10:00pm	8:00am				
Economy 10												
5	12:00am	7:00am	2:00pm	5:00pm	7:00pm	10:00pm	12:00am	7:00am	2:00pm	5:00pm	7:00pm	10:00pm
6	2:00am	7:00am	2:00pm	4:00pm	7:00pm	10:00pm	2:00am	7:00am	2:00pm	4:00pm	7:00pm	10:00pm
7	12:00am	5:00am	1:00pm	4:00pm	8:00pm	10:00pm	12:00am	5:00am	1:00pm	4:00pm	8:00pm	10:00pm
8	4:30am	7:30am	1:30pm	4:30pm	8:30pm	12:30am	4:30am	7:30am	1:30pm	4:30pm	8:30pm	12:30am
This preset MUST be adjusted or the unit will remain permanently ON												
9	12:00am	8:00am	8:00am	4:00pm	4:00pm	12:00am	12:00am	8:00am	8:00am	4:00pm	4:00pm	12:00am

Use the box below to write which preset the installer has set your switch to and any details about what times have been reduced for future information:

PRESET NUMBER:	
-----------------------	--